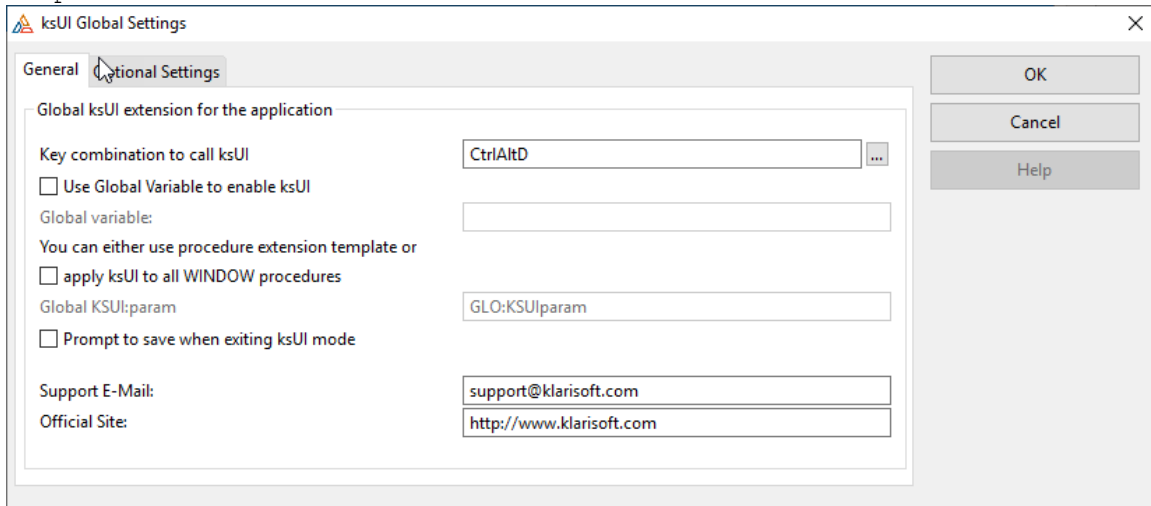


Adding ksUI features to Clarion application

Template Registration

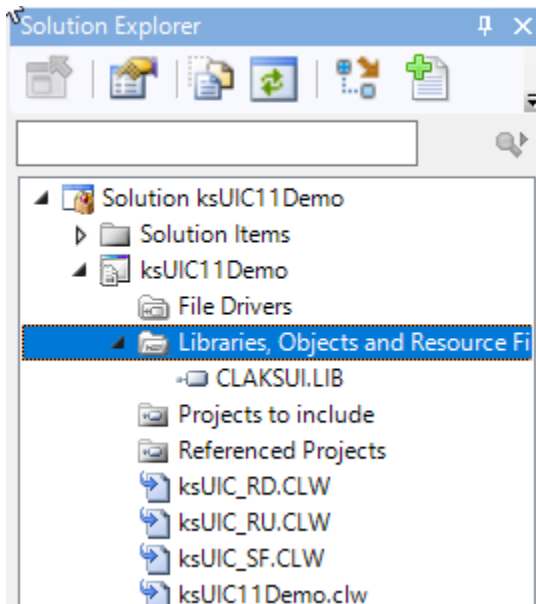
Register ksui.tpl and add *ksUI Global Settings* Global Extension template.



Here you can specify hot key combination to switch window procedure into "design" mode and check if you want to add ksUI extension to all window procedures in the app

Project Settings

Add CLAKSUI.LIB as an external lib file to the project tree.



Adding Extension Template to Window Procedure

Add ksUI extension template to a Window procedure

Use ksUI on a Window

This template applies ksUI setting to a window

ksUI parameter:

To support different setting for the same window
set KSUI:param value
You can use string constant or variable (prefixed with !).
When set to 'ORIGINAL' then original window settings are used

☐ Use condition to show ksUI screen

Condition variable:

OK
Cancel
Help

☒ Quick Access

Here you can specify variable for a *parameter* value. Same window procedure can use different parameters to allow different settings. For example it can be User ID or User Group ID.
You can also add conditional variable to switch to design mode.

Usage

When hot key combination is pressed window switches into design via call below

```
KSUI:ProcessWindow(Window,?, 'Main', pMode, LOC:ksUISettings)
```

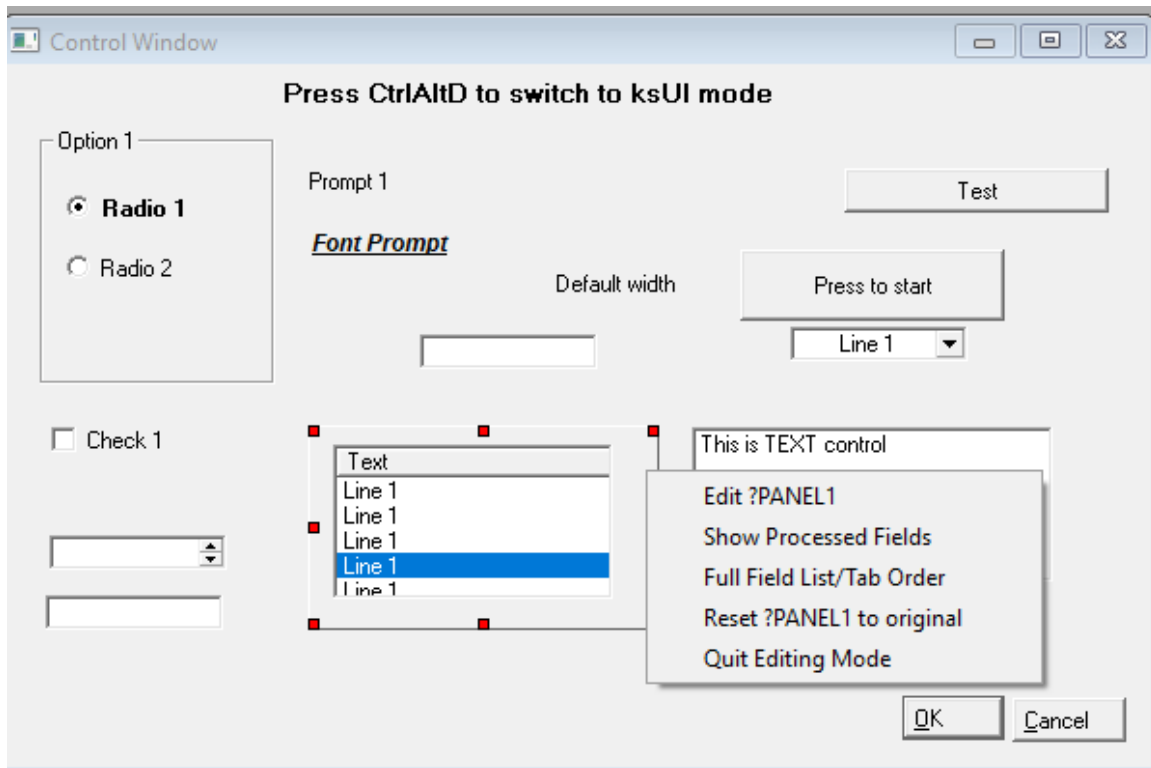
First two parameters are current window and control which is having focus. Third parameter is unique window identifier (procedure name).
pMode specifies parameter as discussed above.
LOC:ksUISettings is a group defined as

```
ksUISettings          GROUP, TYPE
ksUIPath              STRING(256)
Password              STRING(128)
PromptOnExit          LONG(FALSE)
END
```

Where path and password to the ksui file are specified. (ksui file stores all the information about window control's properties)
PromptOnExit flag if set to TRUE will prompt user if they want to save changes after exiting design mode.

At Runtime

When hot key combination is pressed window switches into design mode. User is able to select individual controls, resize them or change properties. To do that right click on a control and select Edit option from the popup menu



Here you can set control properties similar to Clarion Window designer

